



H135
FTD Level 2-3 simulator



entrol

Since 2005

The best simulators for all

Since 2005

- Family owned company
- + 20 aircraft developed
- + 70 simulators installed
- + 20 countries
- One stop service for spare parts and maintenance
- One of the largest showrooms in Europe located in Madrid

In-house technology

- Entrol's designed panels with high-quality components
- Control loading system with digital motors
- MQTG with manual and automatic tests
- Own developed input / output system
- High resolution databases
- COTS elements
- Flight model developed by entrol



H135 type specific simulator

Full-equipped cockpit

- Dual GTN 750
- Spherical visual
- Vibration system
- High resolution database
- Debriefing station
- Initial NVG
- Formation flying
- Infrared camera
- entrol mission

Certified simulator

- EASA FTD Level 2-3
- FAA FTD Level 6-7

Reliable

- Entrol's in-house technology
- Easy to maintain
- Long-term support

Turnkey solution

- Installation, training and certification assistance
- 24 month warranty and maintenance
- Spare parts kit and toolbox
- 7 month delivery time



EASA FTD Level 2-3 and FAA FTD Level 6-7 certified

Certified simulator for:

- Type rating
- IFR checks
- Recurrent training
- Operator Training
- PBN
- Initial courses (MCC, IR, CPL, ATPL)

It also provides solutions for:

- H135 procedures and systems training
- Mission training



Spherical visual

- Spherical dome display
- Field of view of 200° x70°
- 6x high end projectors



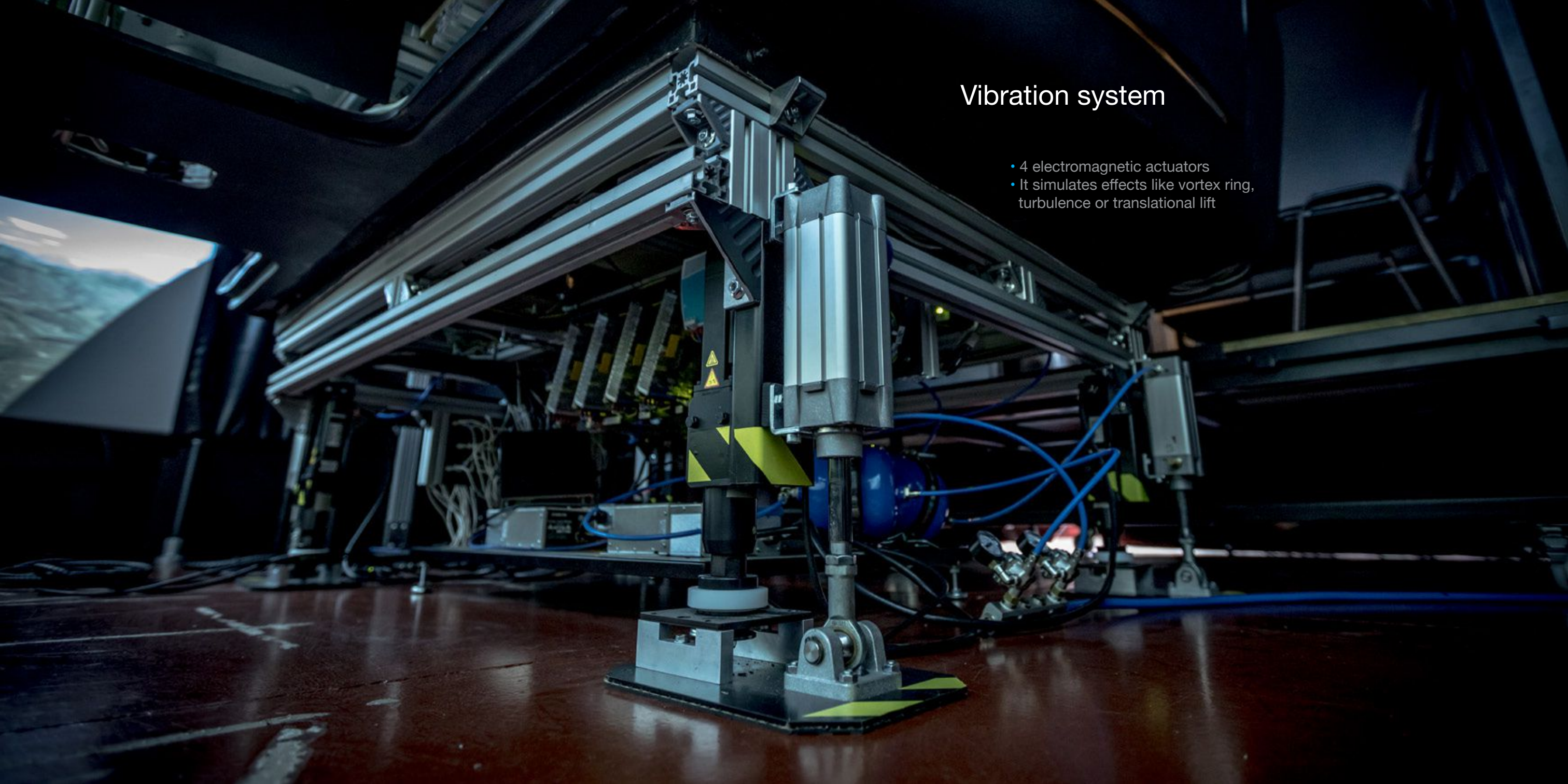
High resolution database

- Satellite imagery
- Resolution up to 1 meter per pixel
- Specific 3D buildings
- Winter conditions
- Mission training areas
- Special effects such as brown-out or down-wash



Vibration system

- 4 electromagnetic actuators
- It simulates effects like vortex ring, turbulence or translational lift



entrol mission

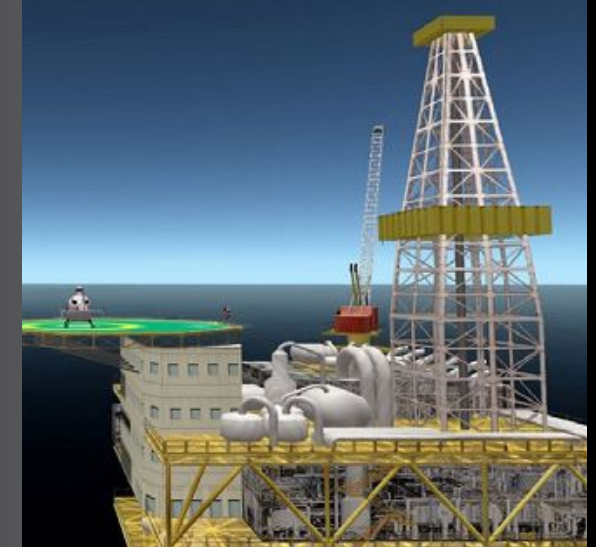
EMS

- MEDEVAC scenery
- Hospitals
- Elevated helipads



Offshore

- Oil rigs
- Offshore wind farm



SAR

- Ship landing
- Hoist control
- External mirror



Fire fighting

- Drop and load water
- Success ratio
- Retardant

Enclosed instructor station

- Touch Screens
- Easy interface
- Full control of the simulation (Weather, failures, fuel, position,...)
- Automatic QTG's
- Additional 3rd screen for mission monitoring
- Tablet for remote control



Other features included in the simulator:

Formation flying

- Diamond, heavy right/left, echelon right/left,...
- Optional interconnection with other Entrol simulators



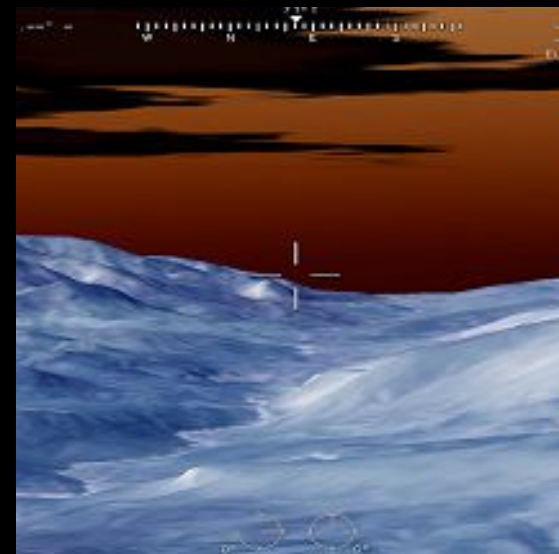
Debriefing station integrated with IOS

- Camera inside the cockpit to record exercises
- 49" curved screen to replay recorded exercises



Initial NVG

- Real NVG goggles
- Green effect on the visual with night mode



Infrared camera

- Control stick and 2 screens for camera operation
- Communication between pilot and camera operator

Client Benefits

- Fast ROI
- More safety
- Low cost operation
- Reduce cost of type rating courses
- Small footprint and facility requirements
- COTS elements: Easy and cost-effective maintenance
- Simulator covered by a comprehensive after-sales service
- Better knowledge of H135's procedures and performance



Details



showroom

We have one of the largest showrooms in Europe with fixed-wing and helicopter simulators, located just 20 minutes from Madrid-Barajas International Airport.

See

Come and fly our simulators.

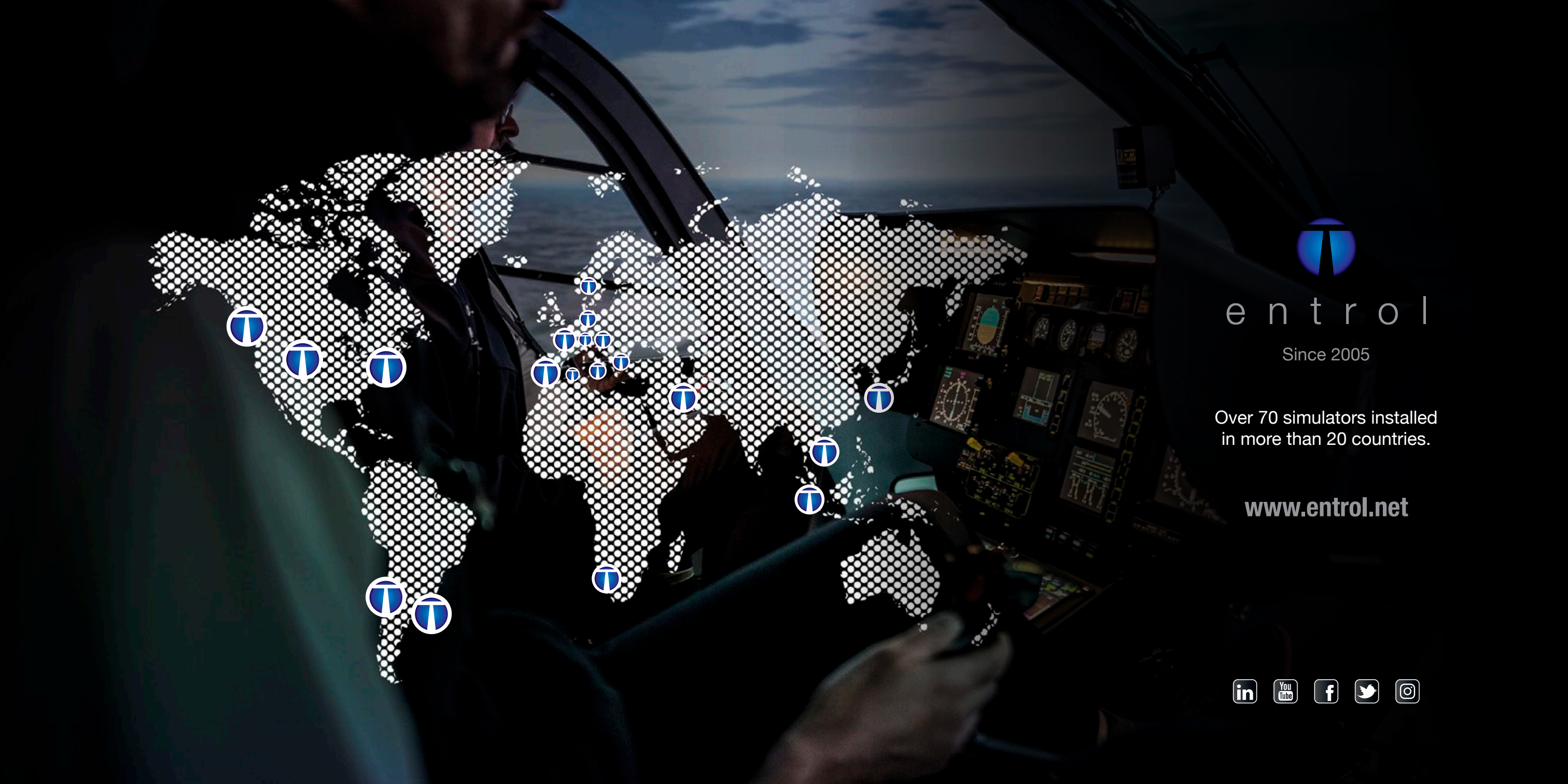
Touch

We provide each visitor exclusive use of the showroom, so take your time to test everything.

Book a demo

Contact us to arrange your visit.





entrol

Since 2005

Over 70 simulators installed
in more than 20 countries.

www.entrol.net

